

Ultra Glide Mirror/Cabinet System Varied Length Instructions

39" Cabinet Rough Opening is 14-1/4" x 37- 3/4"

Install height typically 45" with 42" tall mirrors

34" Cabinet Rough Opening is 14-1/4" x 34-1/2"

Install Height Typically 39" with 36" tall mirrors

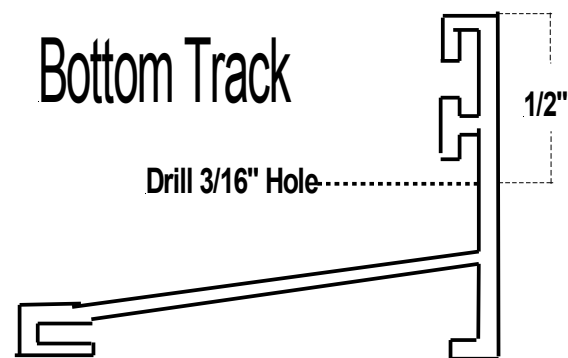
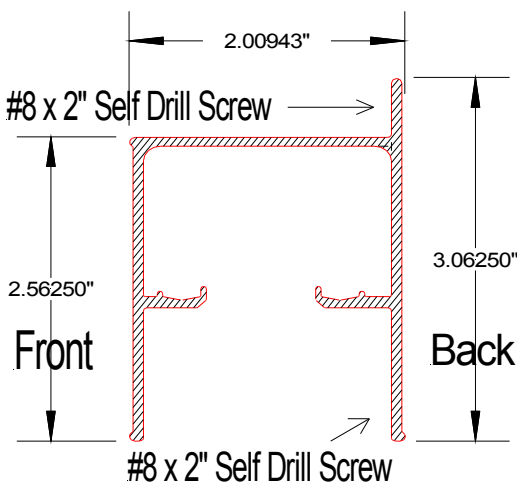
Tools Required

Sheet Rock Saw, Phillips screwdriver, tape measure, Pencil, Level, & Hack Saw, tape

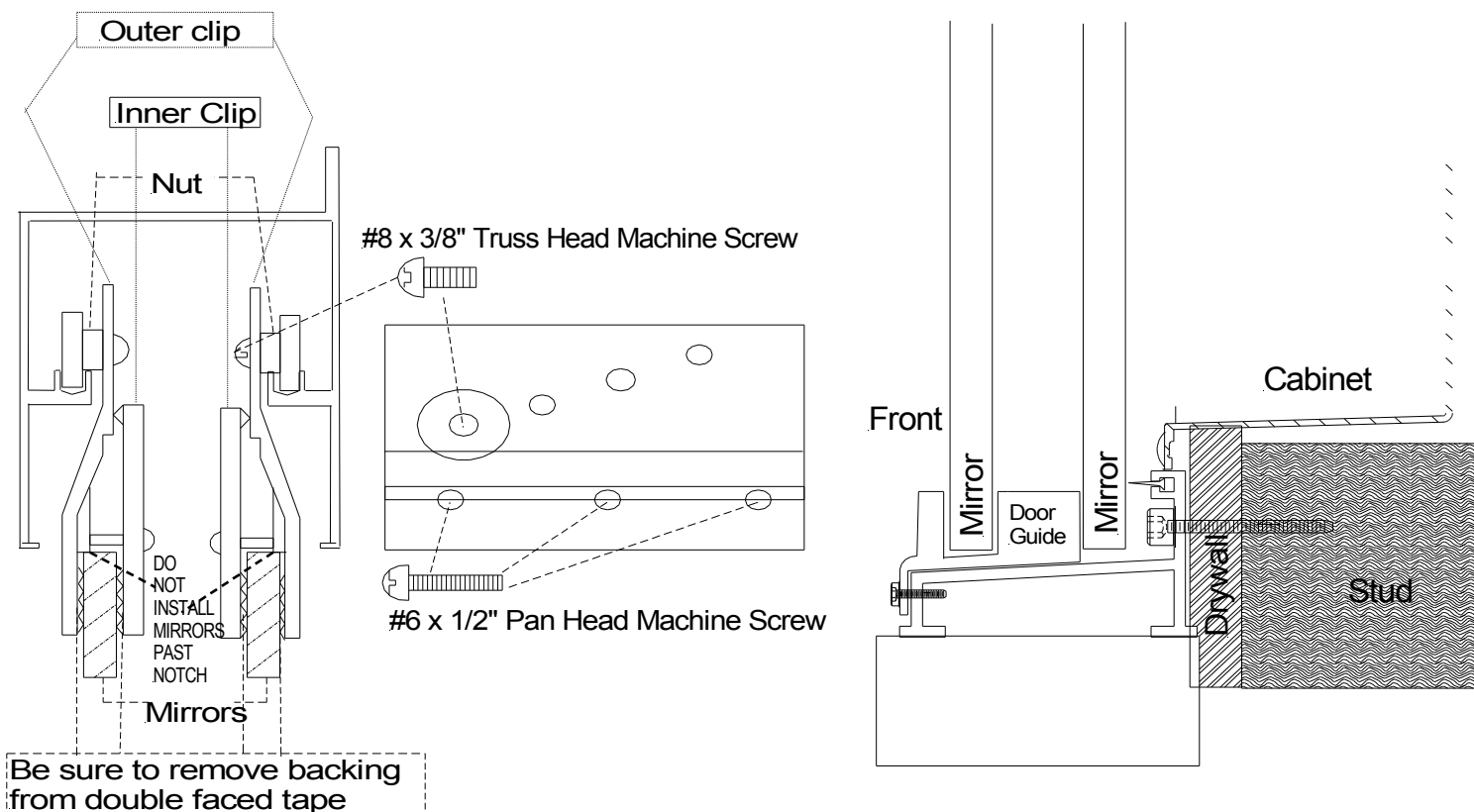
Optional

Stud Finder, # 2 Phillips Bit with magnetic holder, Metal Epoxy

Referring to Builder plans, determine which end of the install the cabinet goes on for 1 cabinet installs, then determine height(See above) of the total install area. To determine *mirror sizes*, divide track by 2 and add 2 inches(42" tall mirrors for 39" cabinets and 36" tall mirrors for 34" cabinets). Locate studs and make sure you have enough track to cover the cabinets, check your backsplash area. and make your rough opening cuts. Install the cabinets using the level on top and using the 4 # 8 x 2" self drilling screws provided. Now place the header on top of the cabinets with a level and center and position header with ends of cabinets making sure there is some overhang in order to cover cabinets up. If you are going into an alcove, measure the track to make sure it will fit if necessary use hack saw to cut 1/4" off to leave enough room for end caps.



With the end cap, remove the double faced tape and install the cap with the short end on the back side of the header. For installation of the header be sure to install at least 1 #8x2" self drilling screw on each end and 1 in the middle and for lengths over 60 inches install screws at 4 of the required stud locations. Now to anchor the header to the wall, use the self drilling #8 x 2" screw in the center of the top leg . Now screw a #8 x 2" self tapping screw into the wall as level as possible at all stud locations and be sure to flush the screw down as close to wall as possible. Now install another #8 x 2" screw in the back of the header about 1/4" above the bottom of the header but be sure to install the screws in locations that cabinets will not be on top of the screws if you haven't installed the cabinets yet. To assemble the mirror clip, remove the double faced tape from the inner clip and outer clip and referring to the drawing on the next page and making sure not to install past the notches to prevent the mirror from breaking while screws are tightened. Measuring 2 inches in on the front mirror, carefully press the inner clip for the front mirror on the back side of mirror. For outer clip, line up the 3 holes on the outer clip with the ones on the inner clip and press the outer clip on the face of the mirror. Now install 3 of the #6 x 1/2" panhead machine screws in bottom 3 holes of the clip. The roller screw (#6 x 3/8" truss head) should be installed on the same side as the other screw heads and in the lowest hole. Do the same for the back mirror but reverse the inner with the outer. With screws tightened down as tight as possible, use a liberal amount of epoxy on the shaft of the 3 screws and mirror inside the mirror clip.



SPECIAL NOTE: If installing 1 cabinet only, use the provided tapping screw to stop the back mirror door from sliding, use the back mirror as the stopped mirror or stationary mirror by sliding it to end cap with rubber bumper in place on end cap where mirror would hit cap and mark where mirror clip roller is on the towards the inside of the roller track. Remove the mirror and screw #6 x 1/2" self tapping screw into the roller track at your mark. Slide mirror back in towards the end cap and lift the mirror up to go over the screw and set it down in its fixed position. Now put the back mirror(If not already done) on the back roller track of header and the front mirror on the front roller track. Slide mirrors out to the end caps slowly and check where mirrors touch end caps that is where you will need to put in the rubber bumpers enclosed(2 per cap). Now find the center of the bottom track and white door guide, place center of guide on track center and screw 1 #6 x 1/2" self drilling screw into each hole in bottom track. Now you will need to guide both mirrors into the center door guide and leave about 3/16" clearance between the bottom of the doors and guide and level the track. Fasten the track to the studs with the #8 x 2" self drilling screws. To fasten handles, measure 2 inches up and 1 inch over on the outside of both mirror edges and use tape to make an L shape template facing to the outside at those marks. Next use the alcohol prep pad to clean mirror inside the template. Allow the alcohol to dry for a few seconds and remove the tape backing from handles. With the handle positioned to the outside of the mirror and with a steady hand adhere it to the mirror.

**American Pride
 526 Crest Road
 Flat Rock, NC 28731
 828-697-8847 fax 828-697-7094**